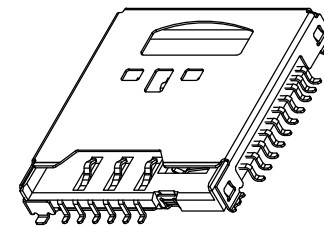
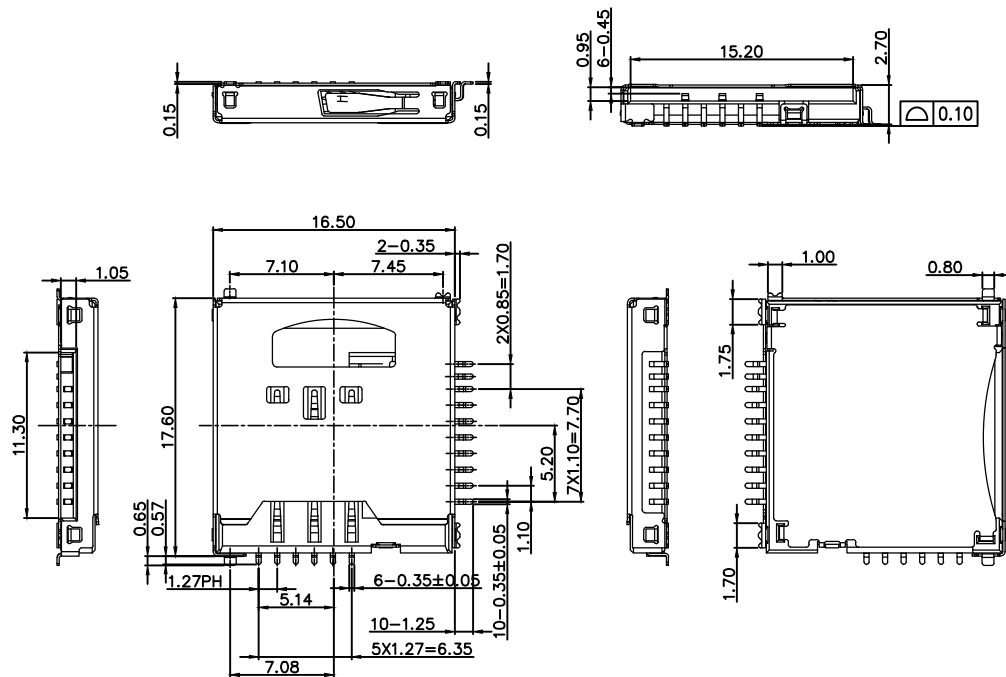


REV.	ECN.NO.	MODIFY.CONTENT	DATE
A		NEW	2013/12/29



T-FLASH CARD				SIM CARD	
pin No	NAME	TYPE	DESCRIPTION	pin No	NAME
1	DAT2	I/O/PP	Date Line[bit2]	C1	VCC
2	CD/DAT3	I/O/PP	Card Detect Date Line[bit3]	C2	RST
3	CMD	PP	Commend Response	C3	CLK
4	VDD	S	Supply Voltage	C4	GND
5	CLK	I	Clock	C5	VPP
6	VSS	S	Supply Voltage Ground	C6	I/O
7	DATO	I/O/PP	Date Line[bit0]		
8	PAT1	I/O/PP	Date Line[bit0]		

Notes:

1.MATERIAL

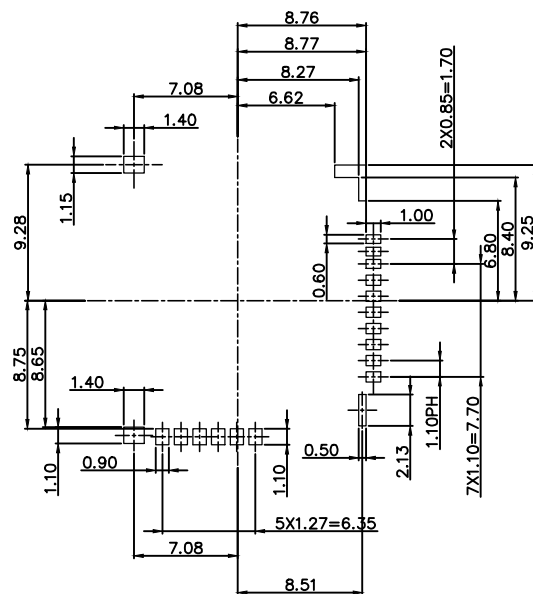
- 1.1 Housing:LCP UL 94V-0 Black.
- 1.2 Contacts:PHOSPHOR BRONZE(C5210R-EH)
- 1.3 Shell:SUS304

2.Plating:

- 2.1 Contacts:50u" MIN NICKEL UNDERPLATED, 100u" MIN Sn PLATED SOLDER TAILS.1U" MIN GOLD PLATED CONTACT AREA
- 2.2 Shell:Gold flash on soldertall area.
50u" MIN NICKEL over ALL

3.ELECTRICAL CHARACTERISTICS:

- 3.1 Operation voltage: 100 V AC max.
- 3.2 Current rating : 0.5 Amps max.
- 3.3 Contact resistance: 40m ohms max.
- 3.4 Insulation resistance: 1000M ohms min. 500 VDC
- 3.5 Dielectric withstanding voltage: 500 VAC / 1minute
- 3.6 Operating Temperature: -25°C to +85°C



RECOMMENDER PCB LAYOUT
TOLERANCE UNLESS OTHERWISE IS ±0.05

GENERAL TOLERANCE		DWG NO.	JYSA1205-001	APPD:	WIND	Scale	1:1
X.±0.45	x.'±5'	Title	SIM+T-FLASH CARD 2IN1 CONN. H=2.7mm	CHKD:		UNIT	mm
.X±0.35	.x'±2'			DR:			
.XX±0.25	.xx'±1'	Part NO.	JYS-SIM270-181	Date	2013/12/29		
.XXX±0.15	.xxx'±0.5'			Shenzhen JYCONN Electronics Co., LTD.			
SHEET	1/1						