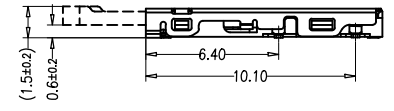
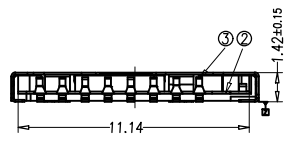
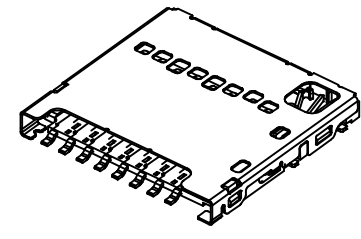
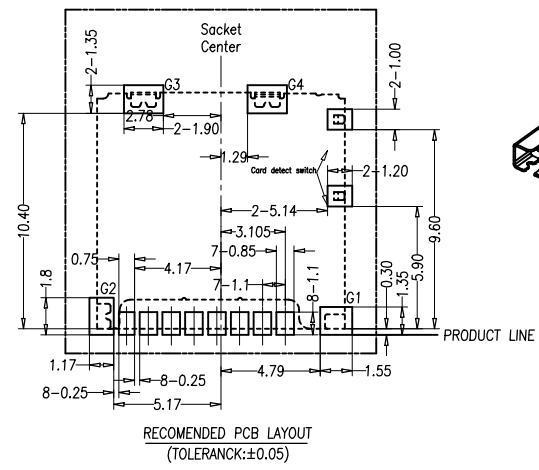
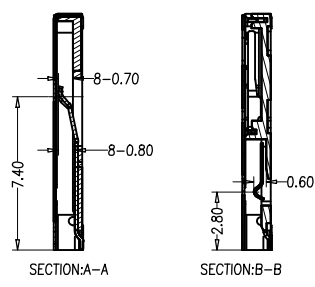
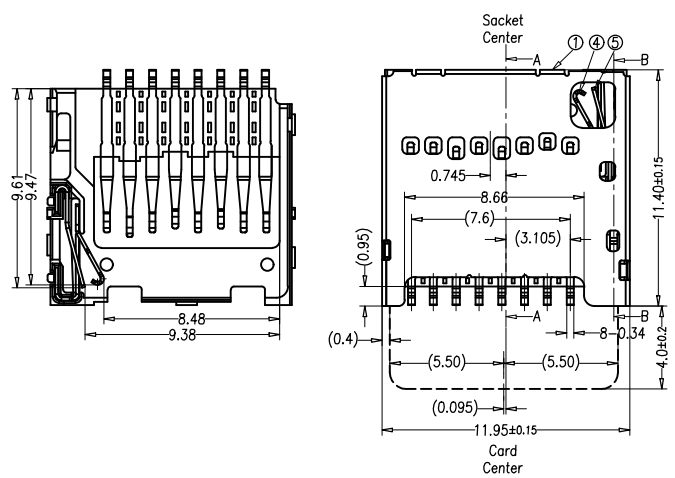


REV.	ECN.NO.	MODIFY.CONTENT	DATE
A		NEW	2019/05/29

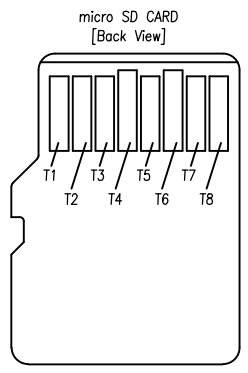


card insertion conation	card detect switch	Circuit Switch terminal Detect terminat
Without Card	open	
Card insertion	Close	

NOTES:
 1.MATERIALS:SEE TABLE.
 2.FINISHES:SEE TABLE.
 3.COPLANARITY OF SOLDER TAILS:0.1mm Max.
 MISALIGNMENT OF SOLDER TAIL FROM"Z"
 UPPER DIRECTION 0.05mm Max,LOWER DIRECTION 0.1mm Max.

[micro SD CARD PIN-MAP]

PIN NUMBER	DESCRIPTION
T1	DAT2
T2	CD/DAT3 ²
T3	CMD
T4	V _{oo}
T5	CLK
T6	V _{ss}
T7	DAT0
T8	DAT1



NO	PARTS NAME	MATERIALS	FINISHES
5	SWITCH TERMINAL	PHOSPHOR BRONZE	CONTACT:GOLD 0.1~0.3um SOLDER TAIL:GOLD 0.03um MIN
4	DETECT TERMINAL	PHOSPHOR BRONZE	CONTACT:GOLD 0.2~0.5um SOLDER TAIL:GOLD 0.03um MIN
3	CONTACT TERMINALS	PHOSPHOR BRONZE	CONTACT:GOLD 0.2~0.5um SOLDER TAIL:GOLD 0.03um MIN
2	HOUSING	LIQUID CRYSTAL POLYMER	
1	METAL SHELL	STAINLESS STEEL	BLACK COLOR UL94V-0
NO	PARTS NAME	MATERIALS	FINISHES

GENERAL TOLERANCE		DWG NO.	JYSA1229-001	APPD:	WIND	Scale	1:1
X.±0.45	x.±5'	Title	MICRO SD 2.0 1.42H	CHKD:		UNIT	mm
.X±0.35	.x'±2'			DR:			
.XX±0.25	.xx'±1'	Part NO.	JYS-TF142-066	Date	2019/05/29		
.XXX±0.15	.xxx'±0.5'						
SHEET	1/1			JYSCONN Shenzhen JYSCONN Electronics Co., LTD.			